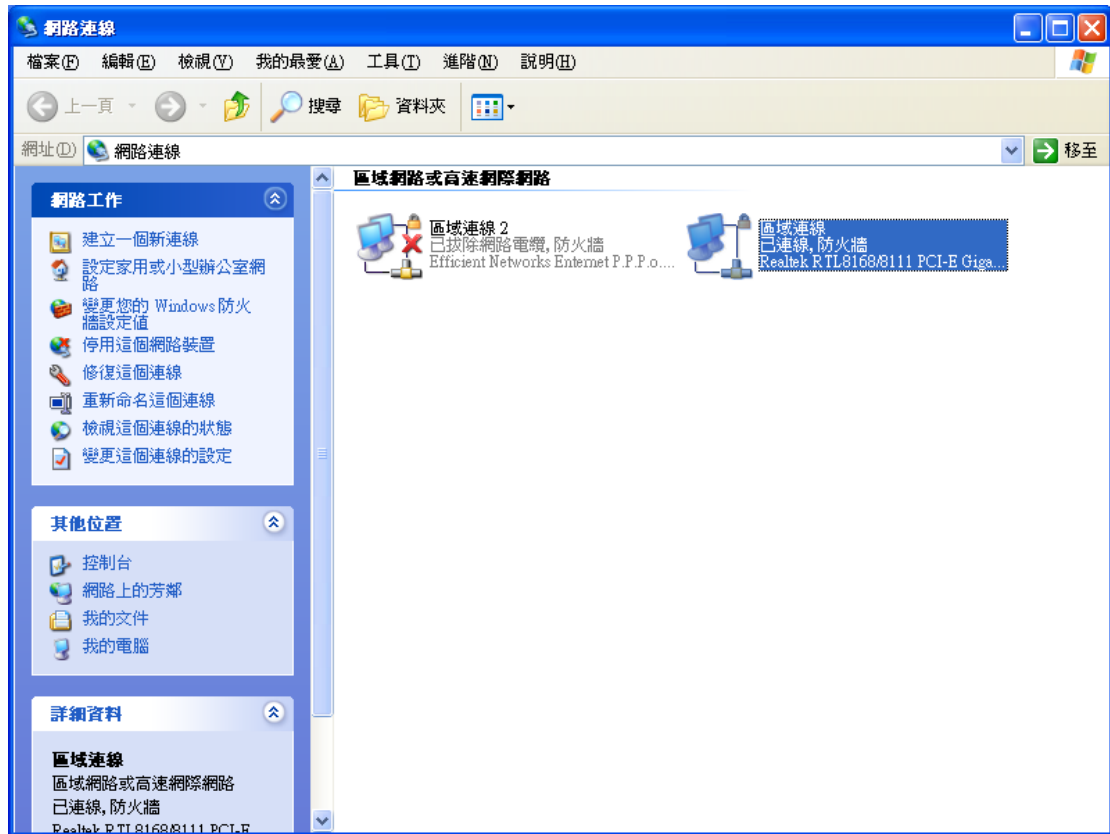


# MaxLong SE332 User Manual

## Install of Hardware

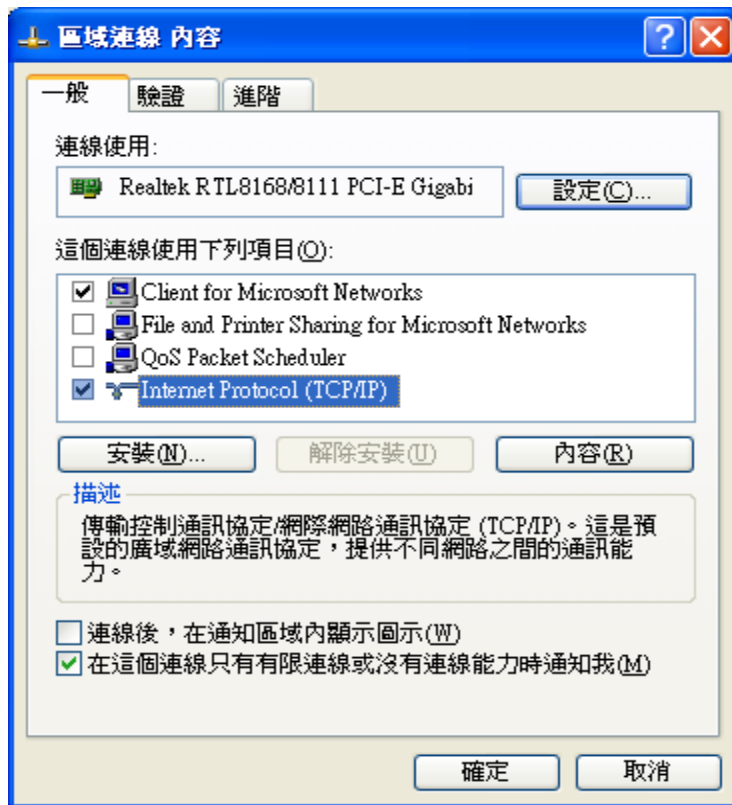
1. First please prepare a PC, a HUB and SE332.
2. Use PC Ethernet to connect with HUB and then use other Ethernet port to connect with SE332.
3. Insert power cord of SE332.  
(The Power Light will light about one second on the beginning, SYS Light will bright and turn off the ON/OFF about five seconds, the Internet of RJ45 Light will bright to the green light, it means present to 100Mbps, when the orange light bright once in a while that means the internet had send data, if the data are sending the orange light will been bright continue.
4. Please confirm the PC IP and the converter whether in the same domain.  
4-1. Modify the PC or NB connect area directly.



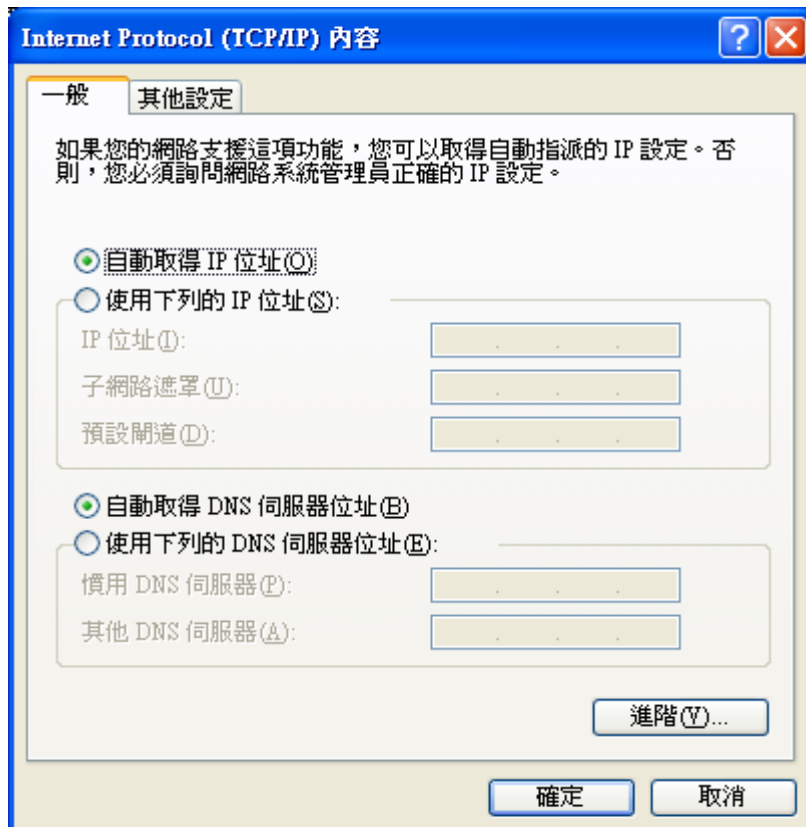
4-2. Click the content



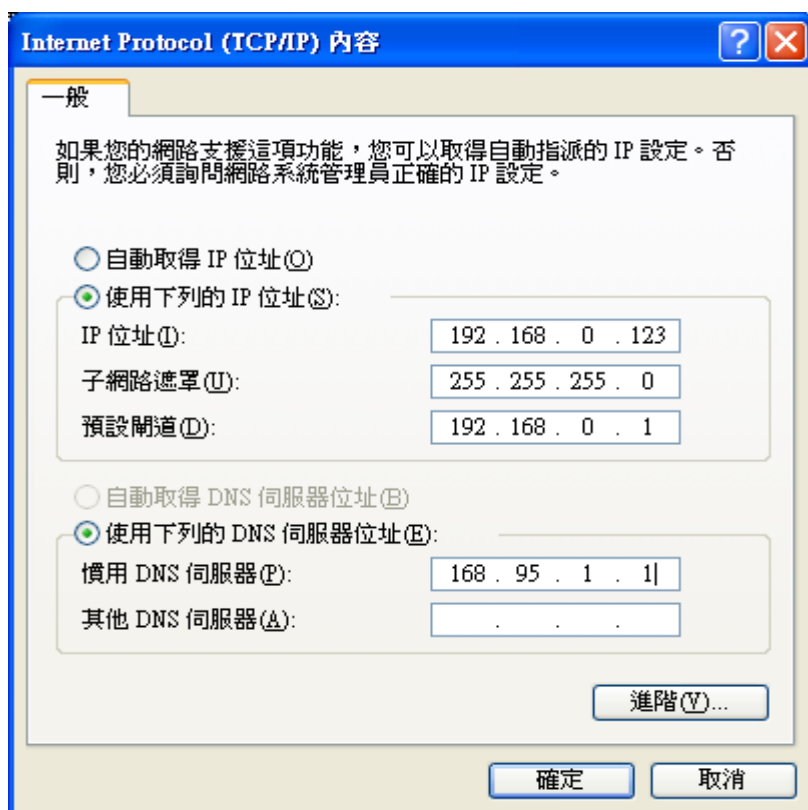
4-3. Click the Internet Protocol (TCP/IP) and press the content.



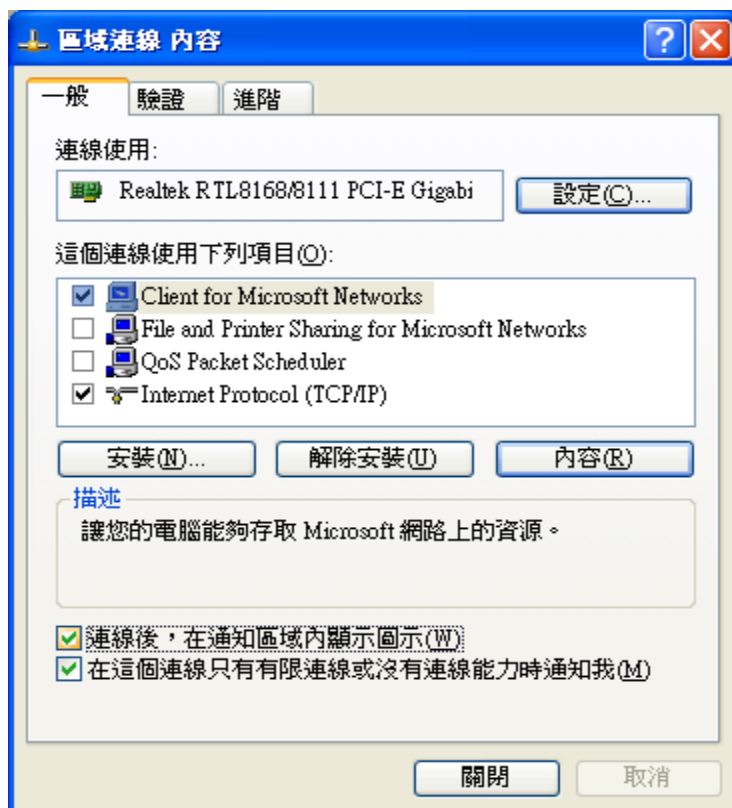
4-4.General “自動取 IP 位置” move to click “使用下列的 IP 位置”.



4-5.Key in the IP address, subnet 遮罩, 預設閘道 and 慣用 DNS 伺服器.

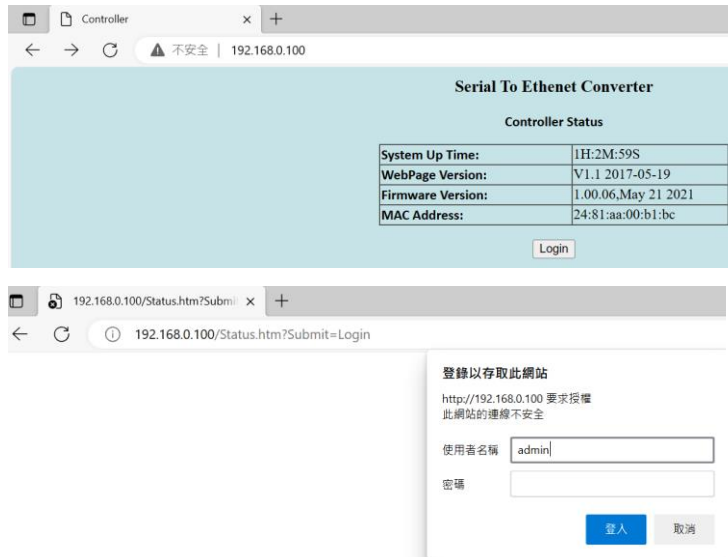


4-6. Press the confirm button than to close this window.



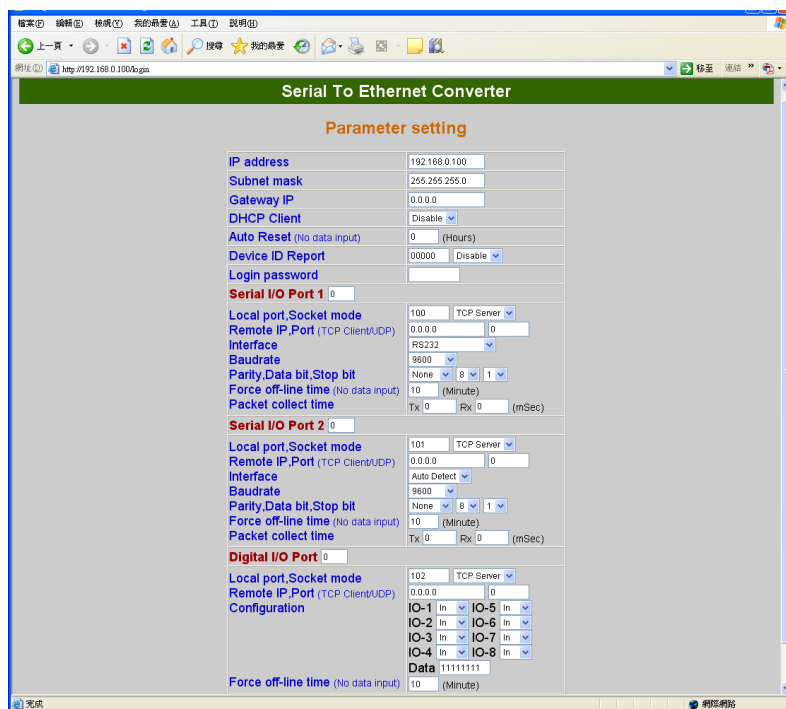
5. Click the WEB Browser.

6. Press Login (If before had set password, please key in the password and then press Login).



※Default Username:admin/Password:” (leave it Blank)

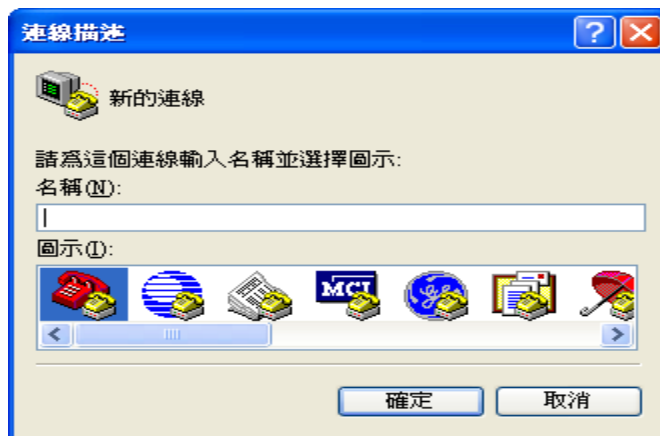
7. Set the Serial I/O Port (For unfamiliar application, suggestion please do not modify any setting value.)



8. Close the setting window or complete the update before to leave.

## Test steps for send and receive data

1. Open the Super Terminating Machine.



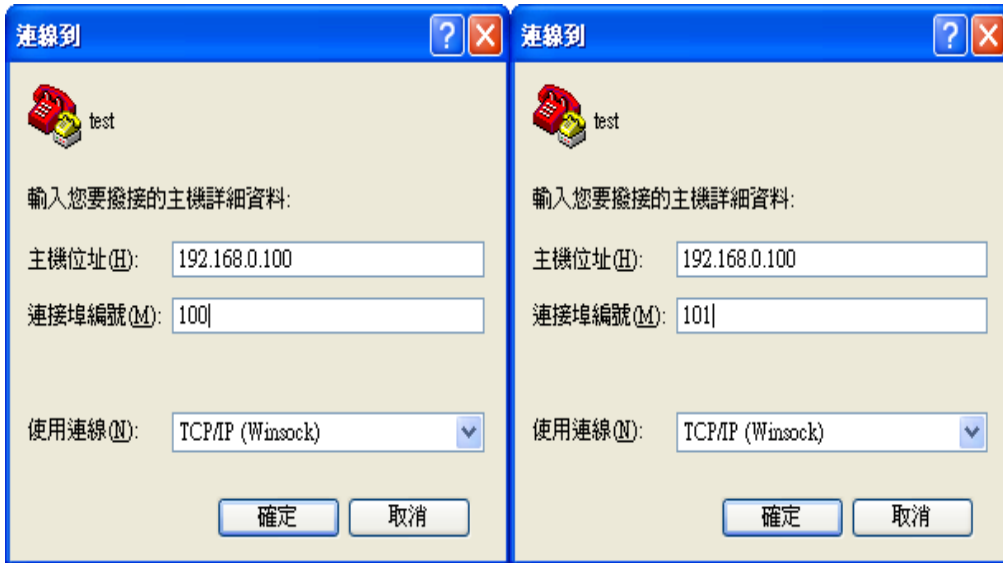
- 1-1. Key in a name (ex. test) and then press enter.



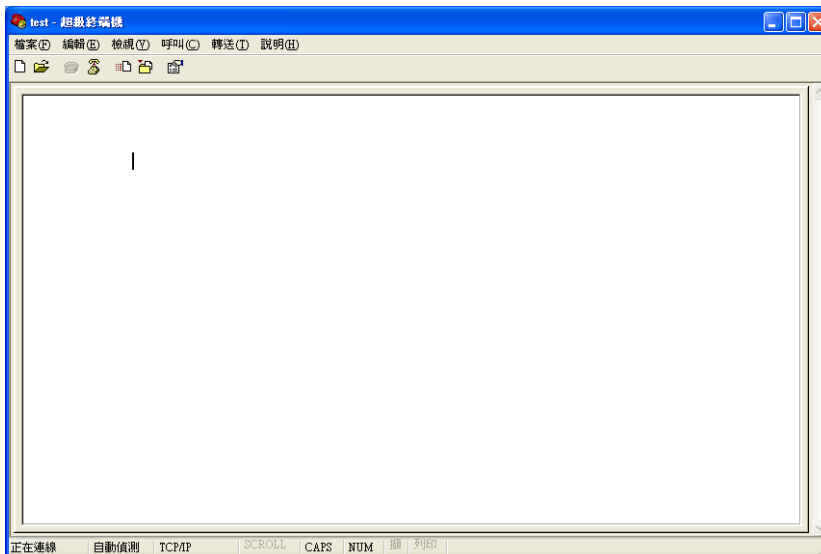
- 1-2. Choose the TCP/IP



1-3.Key in the Converter IP and Socket and then press enter.



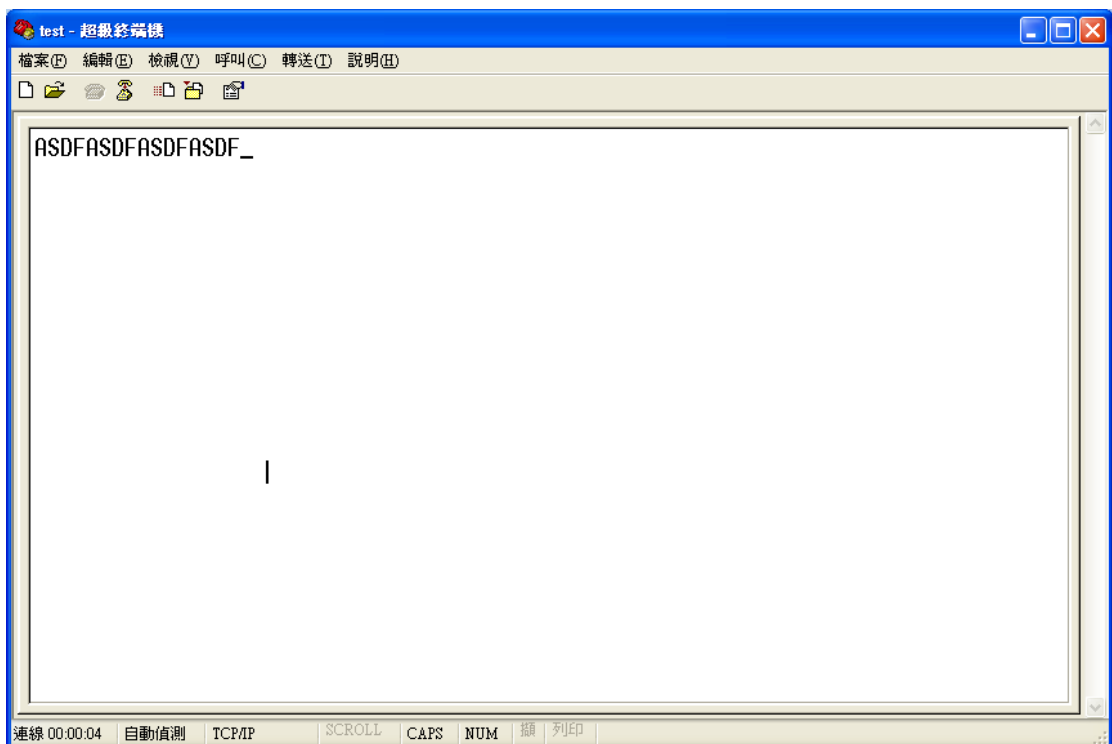
1-4.Complete the unlock window of Terminating Machine.



1-5. Unlock another 101 port and please according 1-1.method

to open (please notice the name of 1-1. need different).

2. General please use the DB9 of NO. 2 pin and NO.3 pin short circuit, the green Terminal Block of T+ connect to R+, T- connect to R- or green Terminal Block of TX connect to RX.
3. In the Keyboard of key in any character that to display the character.



4. For the above step OK means that the testing complete success oneself.