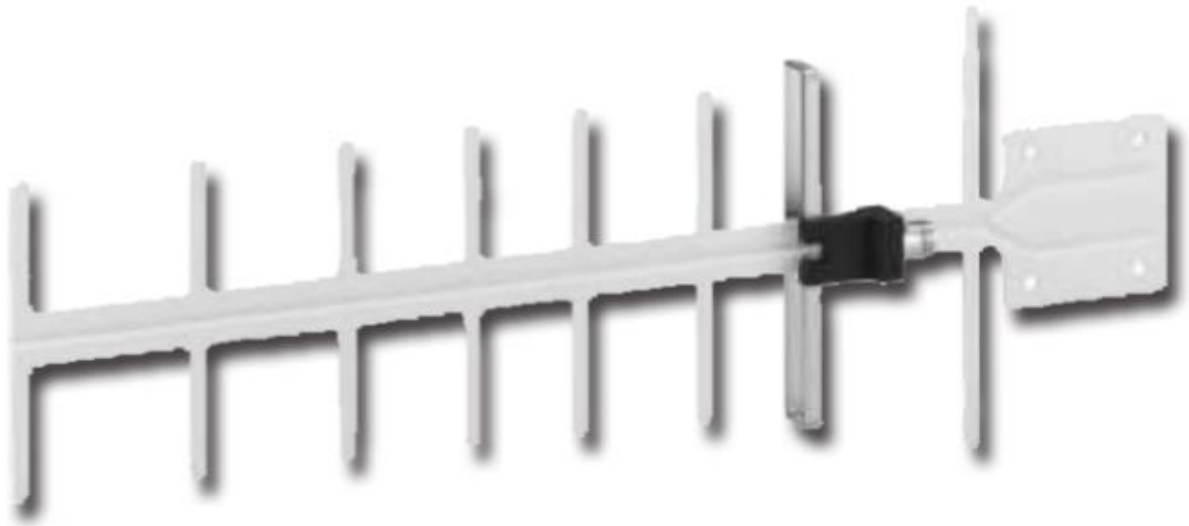


Model Name: SKY-11Y 11dBi directional Outdoor Antenna



1.Features

It is suitable for improving the communication quality in the weak wireless signal areas and in the places where with many base stations. With highly directional Yagi antenna , it could reduce the signal from the side and rear base stations, the communication effect is improved.

2.Specification:

Frequency Range : 800~960MHz

Gain : 11dBi

V.S.W.R. : 1.5:1 (Typical) ,1.7:1 (Maximum)

Radiation Pattern: Direction

Polarization mode : **Vertical**

Horizontal beam width: 48°

Vertical beam width: 60°

Surge protection: Lightning Arrester can be added

Maximum input power: 50W

Impedance : 50Ω

Connector: N Female

Radome : **Medium carbon steel with white paint**

Mount method: Pole Mount

Mount Pole Diameter: Ø30~Ø45mm

Dimensions : 50.5 x 19.2 x 3.8 CM

Weight : 1 KG

Mount kits: U-shaped clip + screw

Wind-Load Rating: 100mPH

IP Rating:IP62

Operating temperature: -5°C to+45°C

Stored temperature: -15°C to+50°C